



**RENT THE  
GLASS HOUSE**

**INSTITUTO BARDI**  
CASA DE VIDRO



The background image shows the interior of Casa de Vidro, a modern building with large glass windows. Several people are gathered around a round table with food, engaged in conversation. The view outside the windows shows lush green trees.

## THE INSTITUTE

Instituto Bardi/Casa de Vidro, founded in 1990, is a non-profit civil society organization headquartered at Glass House, located in the city of São Paulo, Brazil.

The Institute is dedicated in transforming its headquarters into a space for dialogue and knowledge exchange. Its mission is to continue the work of its founders, Lina Bo and Pietro Maria Bardi, by promoting intellectual production in the field of architecture, urbanism, design and the arts in general. Its goals include preserving and publicizing the artistic legacy of Lina and Pietro; guarantee the conservation and organization of its archive and facilitate access to the public; collaborate in publications, exhibitions, lectures and seminars within the cultural and artistic field.

As a way of mobilizing resources to ensure its objectives, the Institute makes available for lease some areas of its facilities for holding cultural events. By holding your event at Casa de Vidro, you support the Instituto Bardi and collaborate to continue its mission.

Check below the information and instructions on how to rent the space.



# THE NEIGHBORHOOD

Subway Station  
São Paulo - Morumbi

Alfredo Volpi  
Park

Station CPTM Vila Olímpia

Cícero Pompeu de  
Toledo Stadium

Palácio dos  
Bandeirantes

Station CPTM Berrini

GLASS HOUSE

Station CPTM Morumbi

1 km





An aerial photograph of a dense, lush green forest. In the center of the image, a large, multi-story house with a dark roof is visible, partially obscured by the trees. The forest is composed of various shades of green, indicating a diverse canopy. The overall scene is a mix of natural greenery and urban development.

## THE NEIGHBORHOOD

Morumbi is a noble neighborhood in the West Zone of São Paulo, which currently preserves a densely green landscape, marked both by the presence of large houses and modern buildings. Endowed with good urban infrastructure, Morumbi has a wide variety of equipment and activities - leisure, commerce and housing -, easily accessible by several bus lines, CPTM (Morumbi and Berrini) and Subway (São Paulo Morumbi Station).





## THE HOUSE

The Glass House\* was the first residence built in Morumbi. Its land is occupied by a rich vegetation, original from the Atlantic Rainforest - a characteristic element of the neighborhood at the time of its implementation and of great importance in the design of the interior and exterior spaces of the residence. The access, from General Almério de Moura Street, is located at the lowest point of the lot, constituting a path that leads the visitor to the house through a large garden.

\*the house is considered a historical heritage (listed by CONPRES, CONDEPHAAT and IPHAN) - thus, a careful and responsible performance of activities is assumed from the moment of rental and the use of its spaces.



A photograph of a lush garden. In the foreground, there is a dense thicket of green ferns and other plants. A stone path with several steps leads up a slight incline. The path is bordered by a low wall made of small, light-colored stones. In the background, there are several tall, thin trees with green foliage, creating a sense of a private forest. The lighting is bright, suggesting a sunny day.

## THE GARDEN

The Glass House's garden occupies an area of almost 7,000 m<sup>2</sup> and was carefully planned by Lina herself. The undergrowth vegetation of the time has transformed into a private forest, with paths decorated with stones and ceramic shards.

THE GARDEN IS THE ENTRANCE AND RECEPTION OF VISITORS.



**GENERAL  
VIEW**

MAIN  
ACCESS

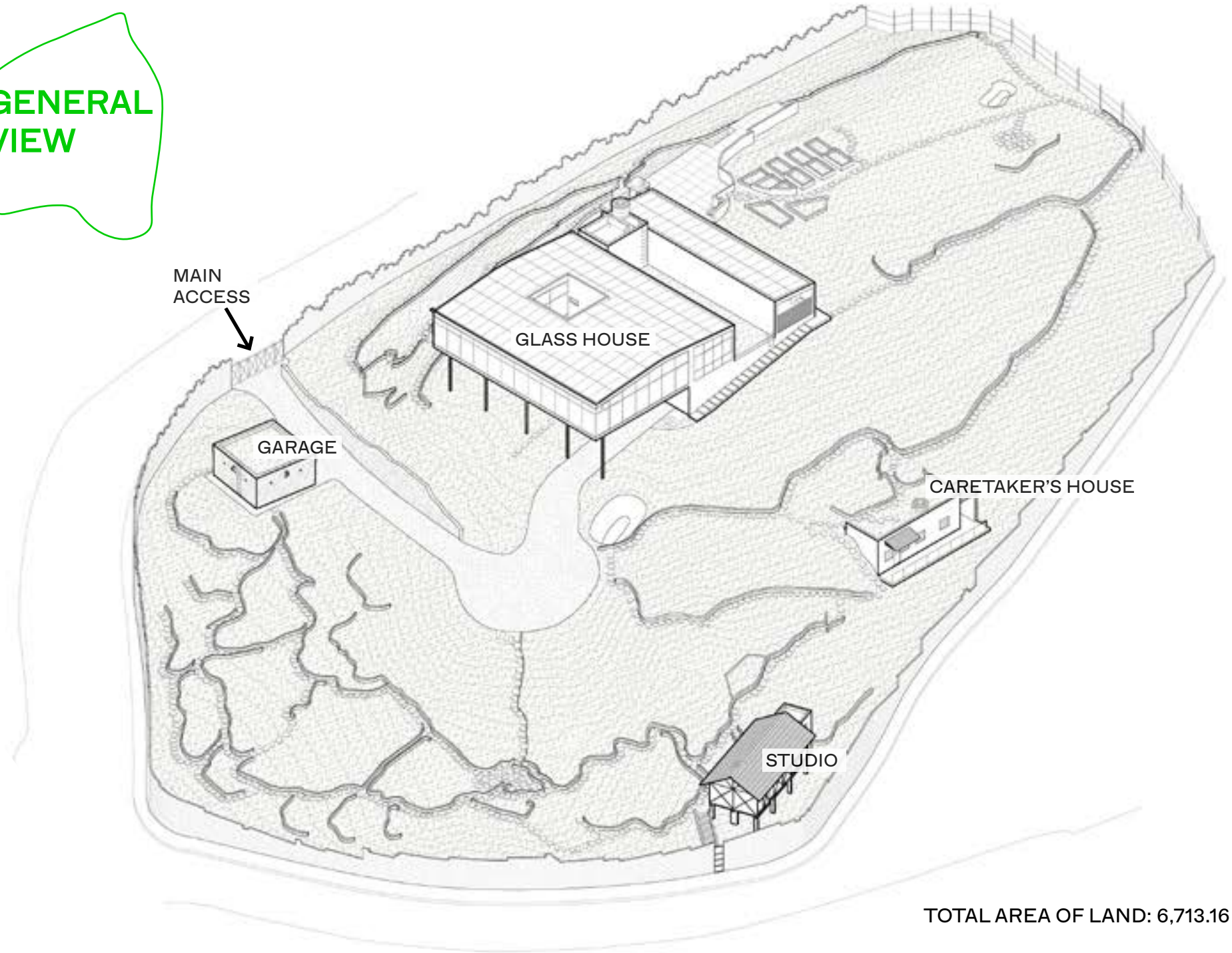
GARAGE

GLASS HOUSE

CARETAKER'S HOUSE




STUDIO

TOTAL AREA OF LAND: 6,713.16 m<sup>2</sup>



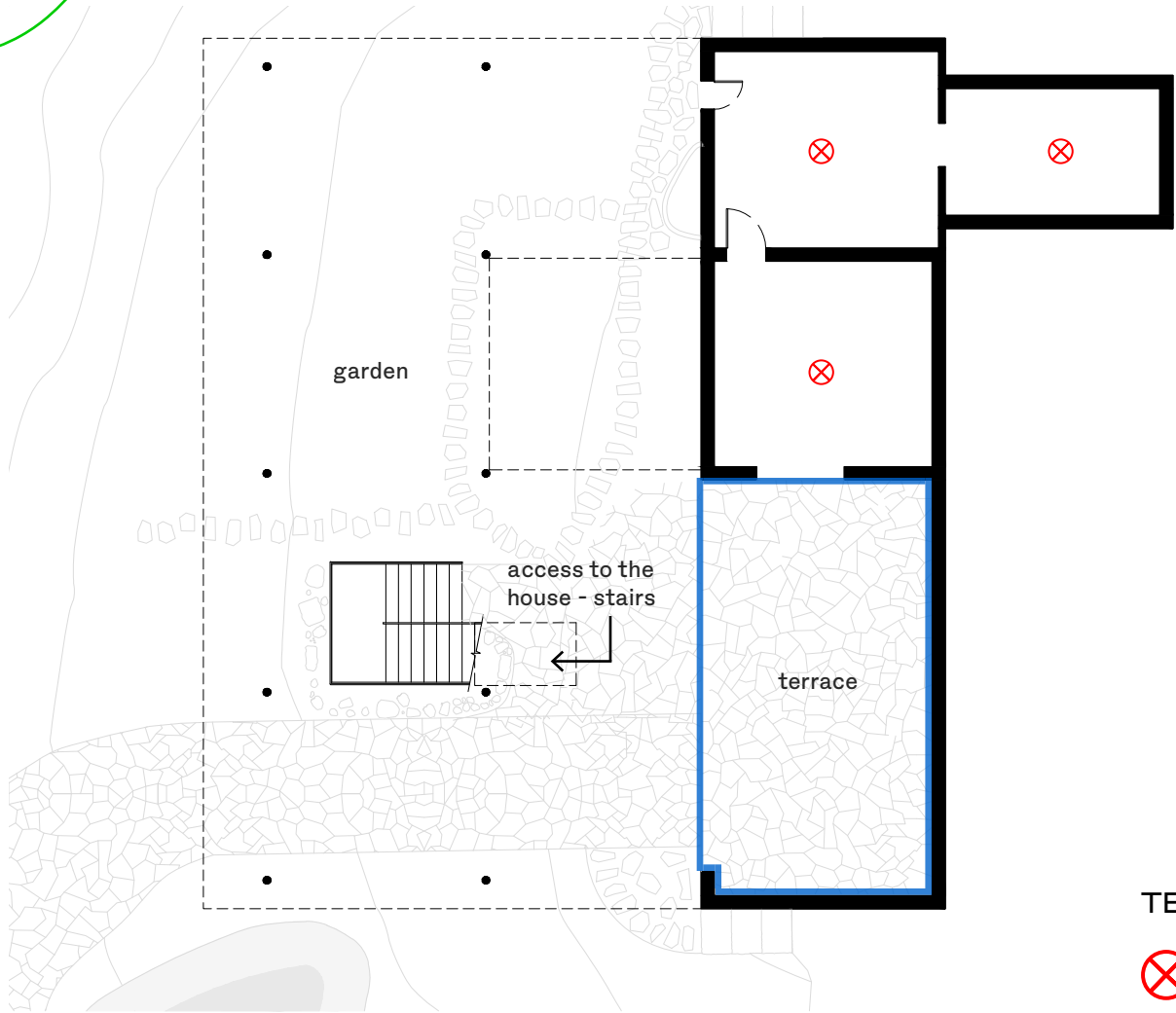
# INTERNAL VIEW



-  Restrooms available for use
-  Spaces available for rent depending on the project/ activity
-  Restricted / administrative access





# GROUND FLOOR PLAN



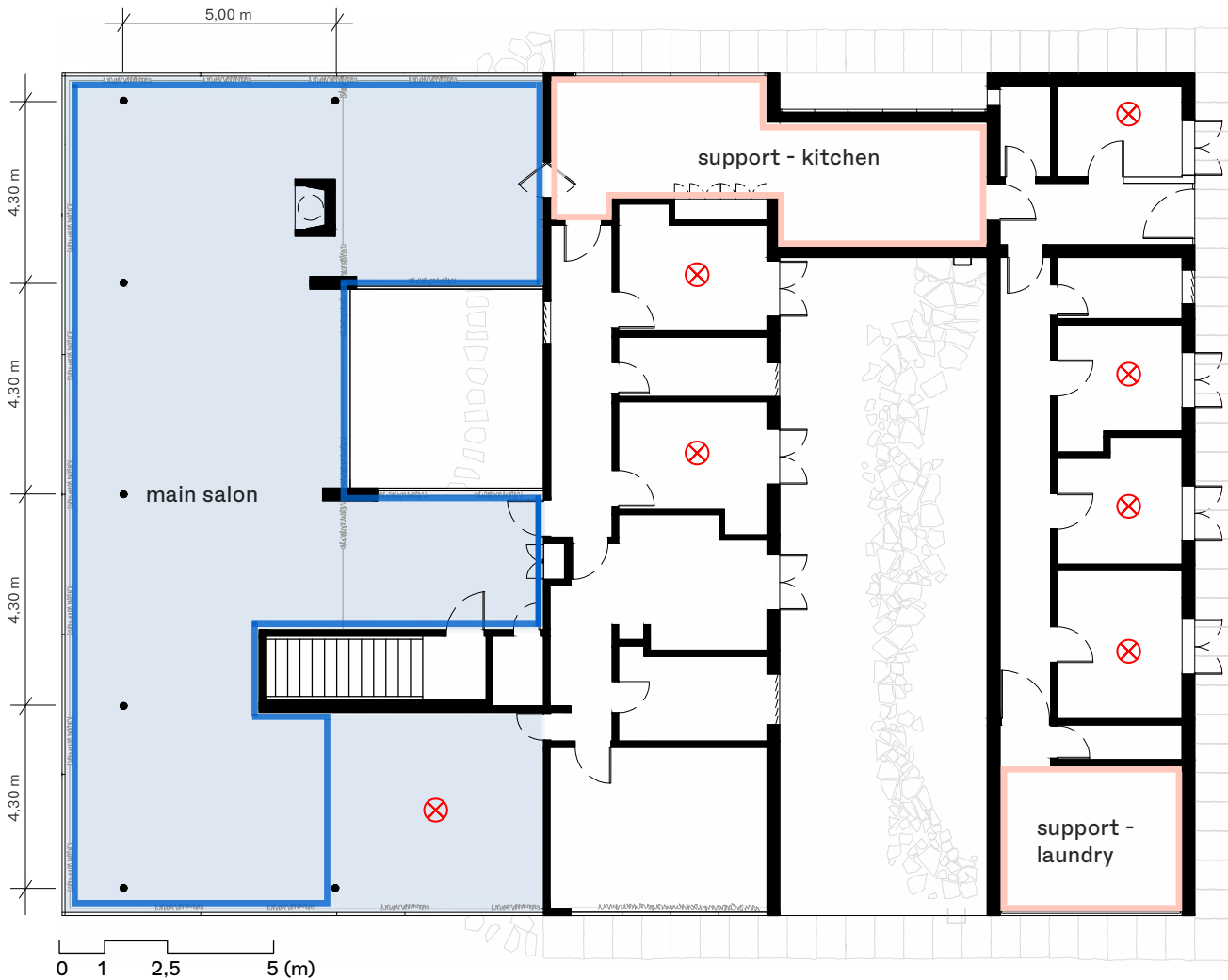
0 1 2,5 5 (m)

TERRACE AREA: 50 m<sup>2</sup>

-  Restricted access/technical area
-  Space for rent



# HOUSE FLOOR PLAN



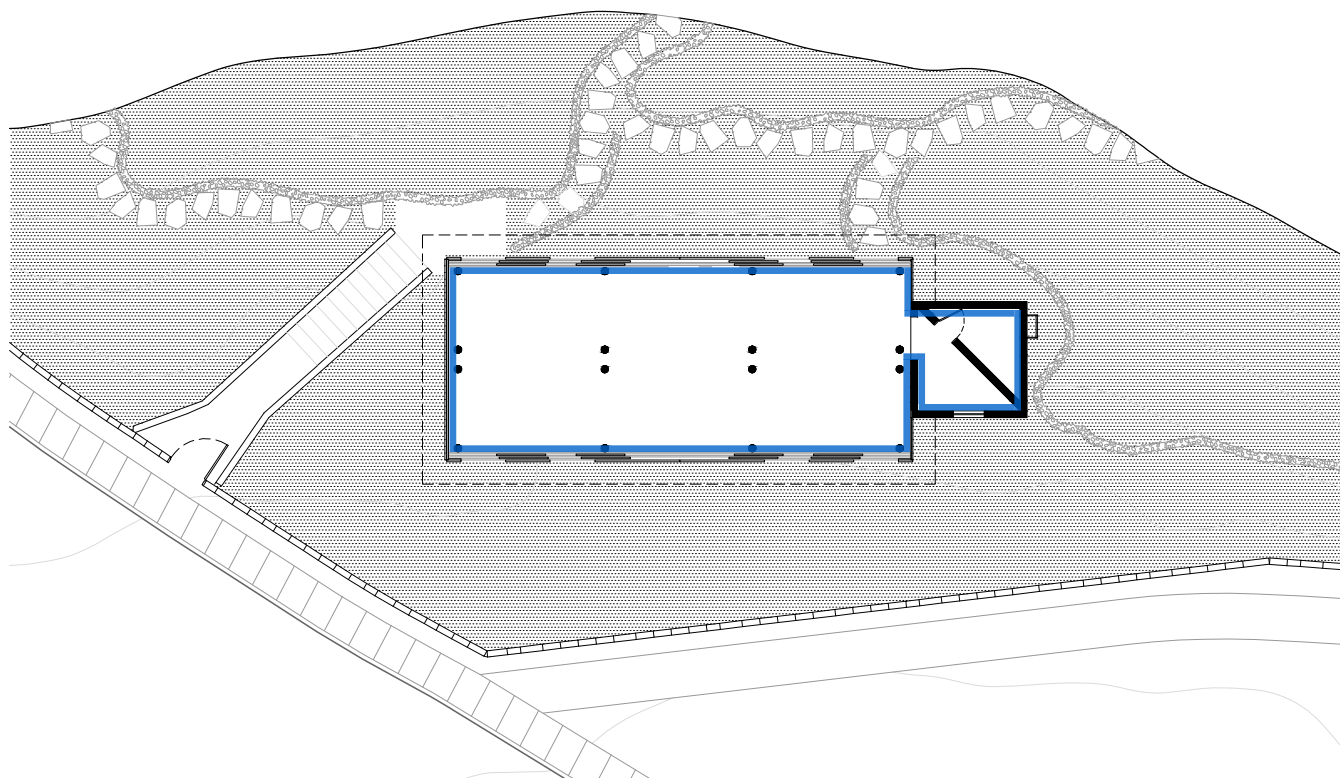
MAIN SALON AREA: 187 m<sup>2</sup>  
 SUPPORT KITCHEN AREA: 29,78 m<sup>2</sup>  
 SUPPORT LAUNDRY AREA: 15,18 m<sup>2</sup>

ROOM'S HEIGHT: 3.07m at the lowest point / 3.77m at the highest point (slope= 12%)

- Space for rent
- Support spaces on event days
- ⊗ Restricted / administrative access



# STUDIO FLOOR PLAN



STUDIO AREA: 54 m<sup>2</sup>

0 1 2,5 5 (m)

 Space for rent



## ADDITIONAL INFORMATION

•It does not have accessibility measures\* for people with reduced mobility;

\*The accessibility project, carried out as part of the Glass House's Management and Conservation Plan, is in the process of approval by Organs competent heritage regulatory agents

•It does not have parking (parking spots available on the street);

•It does not have a food court;

•It offers free wi-fi access for visitors.





## HOW TO RENT?

To rent any of the spaces available at Glass House, just send your request to the e-mail: [infobardi@institutobardi.org](mailto:infobardi@institutobardi.org).

We emphasize that all requests require prior approval by the Instituto Bardi / Casa de Vidro team.





General Almério de Moura Street, 200  
05690-080 | São Paulo, Brazil

+55 (11) 3743 3875 | +55 (11) 3744 9902  
infobardi@institutobardi.org